

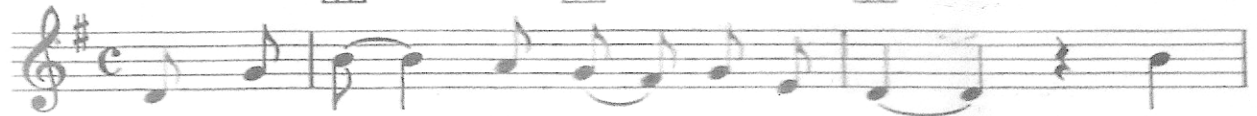
# Aloha Oe

Lili'uokalani  
(1838-1917)  
Arr. by John King

Moderato



'Ukulele in C



Ha - 'a - he - o Ka u - a i nā pa - li, Ke  
Proud - ly swept the rain by the cliffs As

D7



G



C



ni - hi ā - 'e - la i ka na - he - le, E ha - hai a - na pa - ha i ka  
on it gli - ded through the trees, Still foll' - wing ev - er the

G



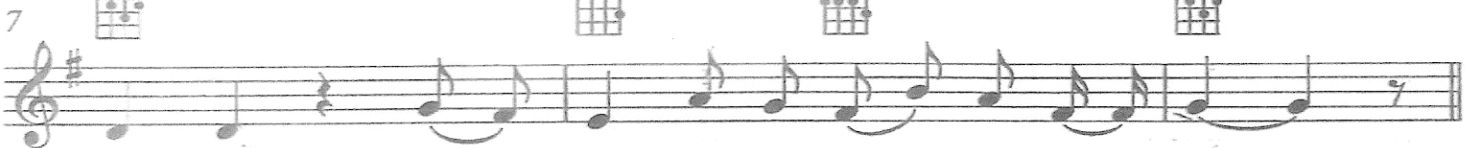
C



D7



G



li - ko, Pu - a 'ā - hi - hi le hua o u - ka.  
"li - ko," The A - hi - hi Le hua of the Vale.

C



G



10 CHORUS



A - lo - ha 'o e, a - lo - ha 'o e E ke  
Fare - well to thee, fare - well to thee, Thou

D7



G



C



o - na - o - na no - ho i ka li - po, A fond em - brace a  
charm - ing one who dwells in sha - ded bow' - rs, One fond em - brace

G



D7



G



ho - 'i a - 'e au, Un - til we meet a - gain.  
'ere I de - part, Un - til we meet a - gain.